



SOUL ESTATES

SALES & LETTINGS

TO LET - 3 BEDROOM HOUSE

HIGGINS LANE, QUINTON, B32 1LL

£1,100 PCM

Soul Estates are proud to present this well-presented 3-bedroom semi-detached house To Let. This perfect family home is situated in a very popular area of Quinton. Situated near local schools, amenities and easy access to Birmingham.

The property offers an entrance porchway leading into the hallway with rooms going off to the spacious lounge and family kitchen with a dining area. Kitchen with a range of wall and base units to match, splashback tiling, gas hob with an electric oven and breakfast bar and additional storage.

Stairs lead to the first-floor landing which leads off to, two double bedrooms with cupboard space in each, then a further three bedrooms and a family bathroom. The property also benefits from gas central heating and double glazing, a rear garden with a garage and off-road parking to the front.

✓ **3 BEDROOM SEMI-DETACHED HOUSE**

✓ **AMPLE OFF-ROAD PARKING**

✓ **KITCHEN WITH DINING AREA**

✓ **GARAGE TO REAR**











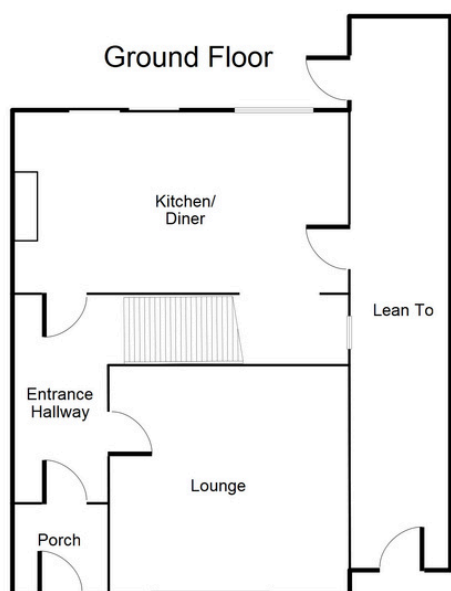
SOUL ESTATES

SALES & LETTINGS

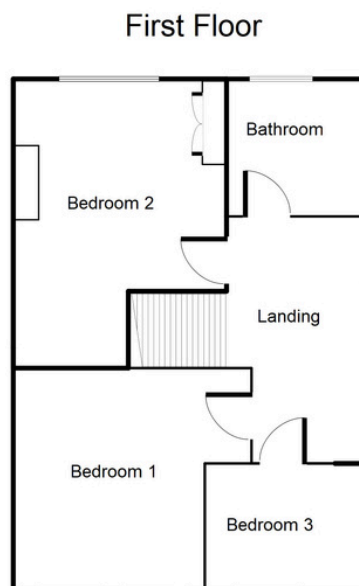
TO LET - 3 BEDROOM HOUSE

HIGGINS LANE, QUINTON, B32 1LL

£1,100 PCM



This floorplan is just an example this is not to scale.
Please see description for exact room sizes.
(c) Soul Estates



This floorplan is just an example this is not to scale.
Please see description for exact room sizes.
(c) Soul Estates

Entrance Porch

3' 1" x 3' 10" (0.94m x 1.17m)

Entrance Hallway

12' 8" x 3' 6" (3.86m x 1.07m)

Kitchen/ Diner

9' 11" x 17' 9" (3.02m x 5.41m)

Lounge

9' 11" x 13' 5" (3.02m x 4.09m)

First Floor Landing

9' 6" x 6' 7" (2.89m x 2.01m)

Bedroom 1

9' 11" x 10' 10" (3.02m x 3.30m)

Bedroom 2

13' 3" x 10' 9" (4.04m x 3.27m)

Bedroom 3

6' 11" x 6' 5" (2.11m x 1.95m)

Family Bathroom

6' 5" x 6' 5" (1.95m x 1.95m)



SOUL ESTATES
SALES & LETTINGS

CONTACT US

Soul Estates
20 Great Bridge
Tipton
DY4 7HA

0121 647 6779

www.soulestates.co.uk

WWW.SOULESTATES.CO.UK | 0121 647 6779